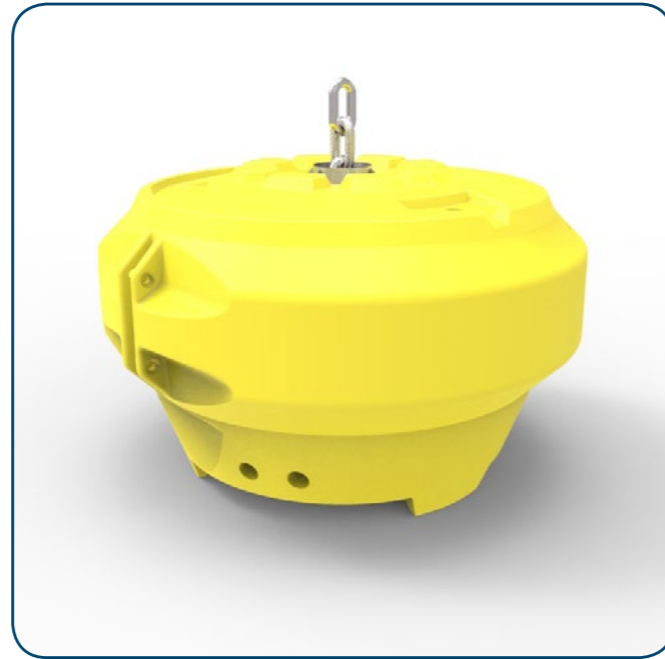
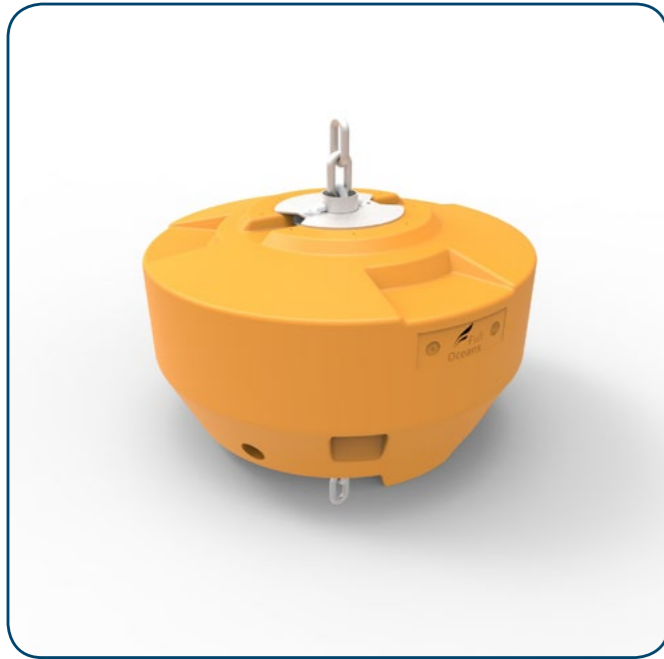
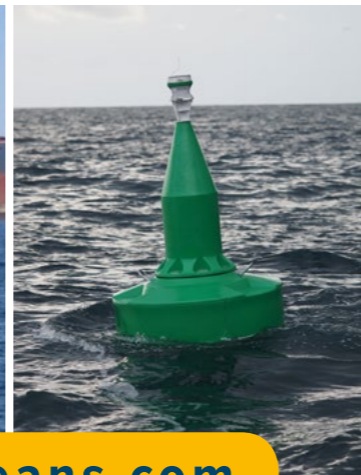
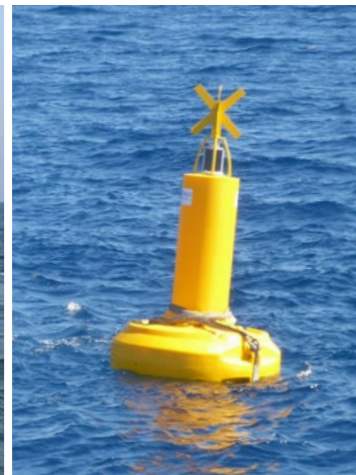


# MOORING BUOYS



SPECIFICATIONS	FLCMOOR1200	FLCMOOR1500	FLCMOOR1800	FLCMOOR2200
Diameter (mm)	1200	1500	1800	2200
Net buoyancy (l)	543	950	1488	3243
Weight (kg)	92	127	210	345
Height (mm)	779	929	1150	1420
Safe Working Load (T)	10	10	20	20
Recommended Chain	ND 25 4D SL2	ND 25 4D SL2	ND 35 4D SL2	ND 35 4D SL2

Rotationally molded UV stabilized high density polyethylene. S235 steel galvanized. Polyurethane foam.  
Available in a wide range of colors.



[www.fulloceans.com](http://www.fulloceans.com)

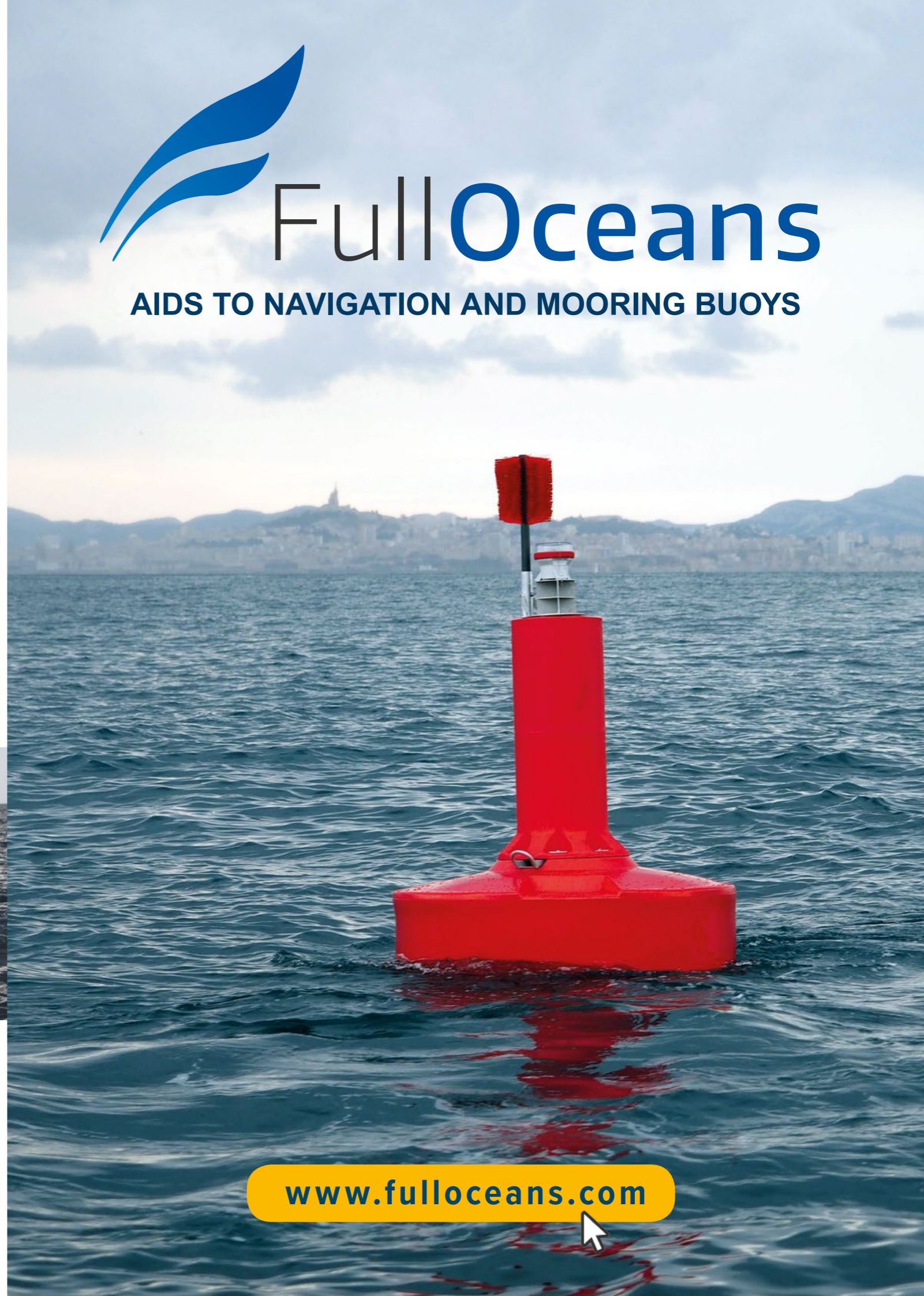
Official distributor :



[www.fulloceans.com](http://www.fulloceans.com)



AIDS TO NAVIGATION AND MOORING BUOYS





## AIDS TO NAVIGATION AND MOORING BUOYS

FullOceans is a French manufacturer specialized in aids to navigation and mooring buoys for the worldwide market.

Integrating the latest R&D innovations and manufacturing technologies, FullOceans produces quality and safety, as well as value-for-money products.

FullOceans commits to invest in the best engineering and industrial manufacturing solutions to reduce the costs of buoys without forgetting the quality and performance demands of the buoys market.

Durable and reliable, FullOceans buoy's range is the perfect solution to meet the needs of maritime, coastal, offshore, river and fluvial projects.



### FLC1200

DIMENSION	
Diameter (mm)	1 200
Volume (l)	570
Draught (mm)	290
Freeboard (mm)	435
Overall height (mm)	1 775
Mast (mm)	1 050
TECHNICAL SPECIFICATIONS	
Weight with ballast (kg)	127
Polyurethane foam (kg/m <sup>3</sup> )	40
Submergence (kg/cm)	1.1
Visible area (m <sup>2</sup> )	1.1
Focal plane max (mm)*	2 058
Current (knots)	up to 4

*Options:* Carmanah lanterns (M550, M650H), topmarks and St Andrew cross, radar reflector



### FLC1500

DIMENSION	
Diameter (mm)	1 500
Volume (l)	987
Draught (mm)	355
Freeboard (mm)	520
Overall height (mm)	1 925
Mast (mm)	1 050
TECHNICAL SPECIFICATIONS	
Weight with ballast (kg)	208
Polyurethane foam (kg/m <sup>3</sup> )	40
Submergence (kg/cm)	1.3
Visible area (m <sup>2</sup> )	1.7
Focal plane max (mm)*	2 191
Current (knots)	up to 5

*Options:* Carmanah lanterns (M550, M650H), topmarks and St Andrew cross, radar reflector



### FLC1800

DIMENSION	
Diameter (mm)	1 800
Volume (l)	1 544
Draught (mm)	560
Freeboard (mm)	521
Overall height (mm)	2 710
Mast (mm)	1 554
TECHNICAL SPECIFICATIONS	
Weight with ballast (kg)	432
Polyurethane foam (kg/m <sup>3</sup> )	40
Submergence (kg/cm)	2.1
Visible area (m <sup>2</sup> )	2.1
Focal plane max (mm)*	2 940
Current (knots)	up to 6

*Options:* Carmanah lanterns (M650H, M850, M860), topmarks and St Andrew cross, service ladder, solar pyramid, high visibility day mark



### FLC2200

DIMENSION	
Diameter (mm)	2 200
Volume (l)	3 335
Draught (mm)	560
Freeboard (mm)	790
Overall height (mm)	3 480
Mast (mm)	2 054
TECHNICAL SPECIFICATIONS	
Weight with ballast (kg)	725
Polyurethane foam (kg/m <sup>3</sup> )	40
Submergence (kg/cm)	3.8
Visible area (m <sup>2</sup> )	3.3
Focal plane max (mm)*	3 700
Current (knots)	up to 6

*Options:* Carmanah lanterns (M650H, M850, M860), topmarks and St Andrew cross, service ladder, solar pyramid, high visibility day mark



Eco friendly: Recyclable polyethylene, heavy metal free



Ballasts: Cast iron



Float and mast: UV-stabilized polyethylene high density



Lightness and Modularity: Easy assembly and deploy



Structure, lifting and mooring points: Hot dip galvanized S235-steel



IALA specifications: Pigments integrated into the polyethylene for no painting ever